

## Datastream: Part 2 (List Creation)

### Introduction

Datastream is used to research current and historical financial data. It covers several types of financial securities and economic series in many countries.

The guide explains how to use Datastream Advance for Office (the Excel Add-in) with a list of companies.

### Access for current students and staff

Datastream is installed on limited PCs in the Library.

- 2 in the Precinct Library (1 dedicated, 1 joint with Bloomberg, book via *My Manchester*)
- 12 in the Finance Zone, Dover Street building G.010 Database Suite
- 2 in G.013 Bloomberg Suite (joint with Bloomberg)



← Double-click “DSsetup - shortcut” on desktop

**HOW TO USE THIS GUIDE:** This guide is split into a number of sections:

- |                                 |                          |
|---------------------------------|--------------------------|
| 1 Overview                      | 4 Results                |
| 2 Importing a List of Companies | 5 Additional Information |
| 3 Using a List in a Request     |                          |

See also *Datastream: Part 1*

### 1. Overview

Datastream is a reporting and charting interface specifically designed for use with Datastream's financial data service. Datastream's interface will let you request over 100 standard reports, charts and data. The Datastream historical financial database provides its users with world stock market indices, fundamentals and economic data.

There are two programs that provide a user interface to the Datastream database. The stand-alone application is the easiest to learn. Datastream Advance for Office (AFO) provides an Excel Add-In that means that Datastream requests can be invoked from Excel.

Our Academic license does not give access to everything in Datastream.

### 2. Importing a List of Companies

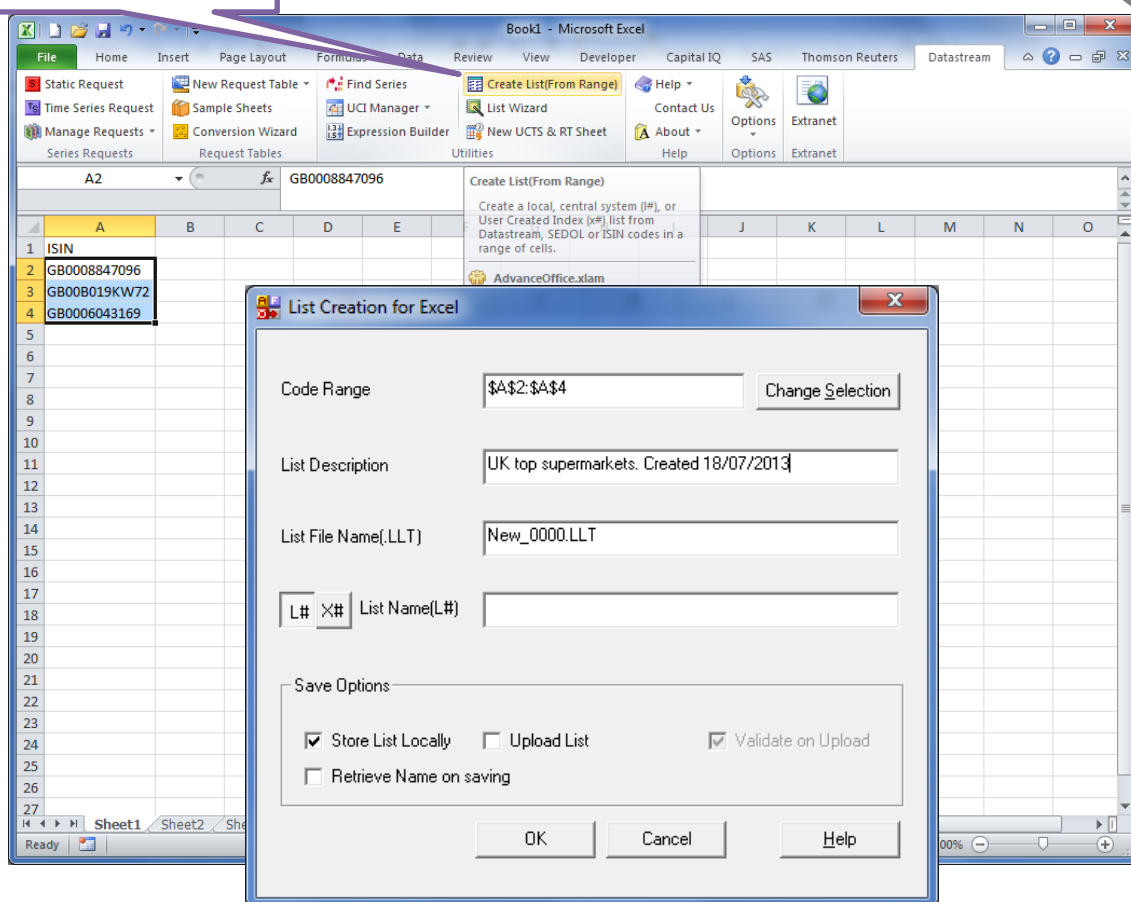
It is possible to import multiple companies from an external database search and conduct further analysis using Datastream Advance for Office (AFO) Excel Add-In.

A common company identifier is the International Security Identification Number (ISIN code) which can be displayed in search results. A list of these codes can be entered into an Excel sheet (copy/paste). To illustrate the process three UK supermarkets will be used:

Tesco PLC	ISIN GB0008847096
Sainsbury (J) PLC	ISIN GB00B019KW72
Morrison (Wm) Supermarkets PLCS	ISIN GB0006043169

Copy and paste the ISIN codes into a new Excel sheet. Select the cells and click on the 'Create List (From Range)' button in the Datastream ribbon tab.

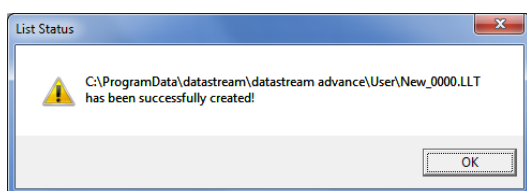
## Create List (From Range)



A 'List File Name' is generated [New\_0000.LLT].

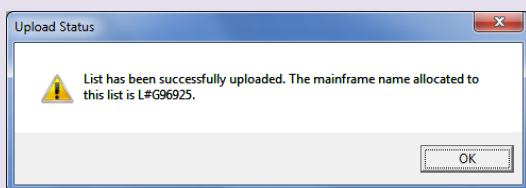
Give the list a name that describes what it is. It is a good idea to keep the date that it provides by default, and perhaps your initials at the start; there can be over 100 lists stored on one of our Datastream PCs at any time, so your list could easily get lost when looking for it later.

Click the OK button to store the list locally (i.e. on the PC you are using at the time).



A dialog window like the one left will confirm that the file has been successfully created and gives a local file address.

## Tip



If you tick the 'Upload List' box, the list will be uploaded the Datastream mainframe and be accessible under the data category 'User Portfolios & Lists'. This means you can download the list again later from another PC which could be more convenient, but it is slower for long lists.

A dialog window like the one left will confirm that the file has been successfully uploaded and gives a reference [L#G96925].

### 3. Using a List in a Request

You can now use the list you have created in a Static Request or a Time Series Request. (Please refer to hand-out Part 1 for explanations on the differences between them.)

Open a new sheet and choose either Static Request or Time Series Request from the Datastream tab.

**1a)** Instead of 'Find Series', click the 'List Picker' icon (magnifying glass). See image below.

**2)** Choose your datatypes as usual, e.g. Price (P), Market Value (MV)

**3)** Choose your data range and frequency, e.g. -2Y to date, Monthly

**4)** 'Display Row / Column Titles' are useful unless you are aligning with existing data.

**5)** 'Transpose Data' is useful when you have more companies or datatypes and fewer days/months/years.

**6)** Ensure 'Auto Refresh' is not ticked or Excel will run slowly.

**7)** Click [Submit].

Either type the 'List File Name' in to the Series/Lists box or click the 'List Picker' magnifying glass icon. You will see the List Picker.

**1b)** Choose your list from all the lists on this PC in the 'Local Lists' tab and click [OK].

This action will be slow for long lists.

#### Tip

If you uploaded your list to the Datastream mainframe, choose the 'User Created Mainframe Lists' tab then use the Datastream Navigator to find your list instead.

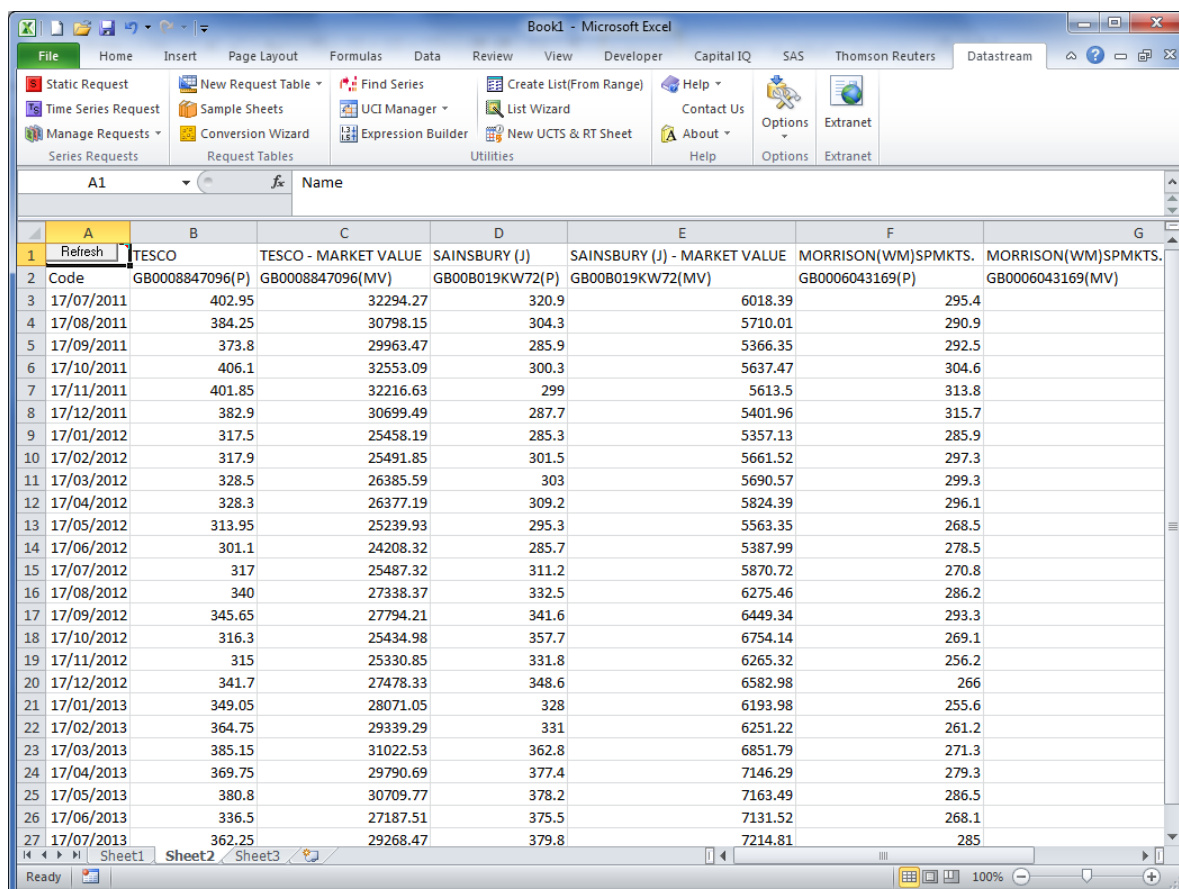
**Local Lists**

- 2013-05-16 UK public companies
- 2013-04-26 US public DS codes
- 2013-04-26 US Public 14410
- 2013-04-26 US public ISIN with E in
- UK supermarkets - Created 18/07/2013**
- Energy Companies

**User Created Mainframe Lists**

- GB0008847096
- GB00B019KW72
- GB0006043169

## 4. Results



The screenshot shows a Microsoft Excel spreadsheet titled 'Book1 - Microsoft Excel'. The ribbon includes tabs for File, Home, Insert, Page Layout, Formulas, Data, Review, View, Developer, Capital IQ, SAS, Thomson Reuters, and Datastream. The Datastream tab is active, showing options like Static Request, Time Series Request, Manage Requests, New Request Table, Sample Sheets, Conversion Wizard, Find Series, UCI Manager, Expression Builder, Create List (From Range), List Wizard, New UCTs & RT Sheet, Help, Contact Us, About, Options, and Extranet. The spreadsheet displays market value data for three companies: Tesco, Sainsbury, and Morrison. The columns are labeled A through G, and the rows show dates from 17/07/2011 to 17/07/2013. The data is organized into three main sections: Tesco, Sainsbury, and Morrison, each with a 'Market Value' column and a 'SPMKTS' column.

	A	B	C	D	E	F	G
1	Refresh	TESCO	TESCO - MARKET VALUE	SAINSBURY (J)	SAINSBURY (J) - MARKET VALUE	MORRISON(WM)SPMKTS.	MORRISON(WM)SPMKTS.
2	Code	GB0008847096(P)	GB0008847096(MV)	GB00B019KW72(P)	GB00B019KW72(MV)	GB0006043169(P)	GB0006043169(MV)
3	17/07/2011	402.95	32294.27	320.9	6018.39	295.4	
4	17/08/2011	384.25	30798.15	304.3	5710.01	290.9	
5	17/09/2011	373.8	29963.47	285.9	5366.35	292.5	
6	17/10/2011	406.1	32553.09	300.3	5637.47	304.6	
7	17/11/2011	401.85	32216.63	299	5613.5	313.8	
8	17/12/2011	382.9	30699.49	287.7	5401.96	315.7	
9	17/01/2012	317.5	25458.19	285.3	5357.13	285.9	
10	17/02/2012	317.9	25491.85	301.5	5661.52	297.3	
11	17/03/2012	328.5	26385.59	303	5690.57	299.3	
12	17/04/2012	328.3	26377.19	309.2	5824.39	296.1	
13	17/05/2012	313.95	25239.93	295.3	5563.35	268.5	
14	17/06/2012	301.1	24208.32	285.7	5387.99	278.5	
15	17/07/2012	317	25487.32	311.2	5870.72	270.8	
16	17/08/2012	340	27338.37	332.5	6275.46	286.2	
17	17/09/2012	345.65	27794.21	341.6	6449.34	293.3	
18	17/10/2012	316.3	25434.98	357.7	6754.14	269.1	
19	17/11/2012	315	25330.85	331.8	6265.32	256.2	
20	17/12/2012	341.7	27478.33	348.6	6582.98	266	
21	17/01/2013	349.05	28071.05	328	6193.98	255.6	
22	17/02/2013	364.75	29339.29	331	6251.22	261.2	
23	17/03/2013	385.15	31022.53	362.8	6851.79	271.3	
24	17/04/2013	369.75	29790.69	377.4	7146.29	279.3	
25	17/05/2013	380.8	30709.77	378.2	7163.49	286.5	
26	17/06/2013	336.5	27187.51	375.5	7131.52	268.1	
27	17/07/2013	362.25	29268.47	379.8	7214.81	285	

## 5. Additional Information

Datastream has gradually developed over the years: in terms of the data available, and the software used to access the data. Datastream is now provided by Thomson Reuters, and their website for Datastream is <http://thomsonreuters.com/datastream-professional/>

**Datastream Workbook:** introductory guide, with worked examples. Available at Precinct Library and Dover Street G.010 Database Suite.

**Business Research Plus** blog: <https://bizlib247.wordpress.com> for worked examples (use the search box for "Datastream").

See also **The University of Manchester Library** website [www.manchester.ac.uk/library](http://www.manchester.ac.uk/library) for training (under "My Learning Essentials") and more guides like this (under Search Resources, Subject Guides, Business and Management, Business Research Skills, Getting started guides).

### Help Information

There is a good deal of documentation for Datastream available. Datastream and Datastream Advance for Office all have help menus that give access to PDF manuals, definition information and glossaries.

[All above links accessed 17 September 2015]